

Precision Training Toolbox: Alignment & Digitization of TL1 Fellow Activity & Assessment Project Description

Angela Alberti and Anda Cytroen

The TL1 program within the NJACTS is a three-year NIH-funded program which provides full-time research, training, and mentorship for predoctoral candidates and post-doctoral fellows seeking additional training in clinical research. The goals of the TL1 program are to 1) increase the number of well-trained clinician-scientists who can lead the design and oversight of future clinical investigations critical to the overall mission of NCATS and NIH, 2) help fellows understand the principles of translational science from the beginning of their research careers and 3) provide each fellow with one year of support that includes stipend/salary and benefits, tuition, and funds for professional travel and research-related expenses. The goal of the Fall 2020 mini virtual internship was to create a centralized digital platform to ease data entry, collection, and analysis for the TL1 program. By leveraging my experience in another training program at Rutgers and my data management and research-related skills, I performed a gap analysis of all existing program data and reviewed best practice approaches of other TL1 programs in the country. I additionally reviewed other technology platform options to provide insight into what might best serve the TL1 program administrators and program fellows in the future. The result of this internship was the creation of a CANVAS site to serve as a central repository for the program. Additionally, through an investigation of an external module within REDCAP, we determined that Flight Tracker for Scholars may be a useful tool for this program.

PROJECT PRIORITY#1

Perform a detailed inventory of all existing program data as well as a gap analysis

PROJECT PRIORITY#2

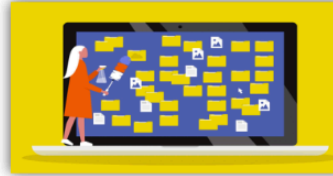
Leverage existing technology to create a precision training toolbox which enhances the experience of TL1 fellows and creates efficiencies to measure program outcomes

The process

Centralize all program files



Inventory and organize files



The products

Data inventory/dictionary

Table Name	Table Description	Table Type	Table Status	Table Location	Table Access
TL1_Fellow_Information	Stores basic information about TL1 fellows, including name, email, and contact details.	Table	Active	RedCap	Read/Write
TL1_Program_Information	Stores information about the TL1 program, including dates, locations, and administrative details.	Table	Active	RedCap	Read/Write
TL1_Assessment_Information	Stores information about the various assessments and evaluations conducted throughout the program.	Table	Active	RedCap	Read/Write
TL1_Research_Activity	Stores information about the research projects and activities undertaken by the fellows.	Table	Active	RedCap	Read/Write
TL1_Training_Activity	Stores information about the training sessions, workshops, and educational activities provided to the fellows.	Table	Active	RedCap	Read/Write

Gap Analysis

Item	Item Description	Item Status
1	Program evaluation	Not started
2	Satisfaction survey	Not started
3	End of program assessment	Not started
4	Percentage of fellows submitting grant applications to fellow office	Not started
5	Percentage of fellows dedicated to career development	Not started
6	Percentage of fellows submitting abstracts to conferences	Not started
7	Percentage of fellows submitting manuscripts	Not started
8	Percentage of fellows submitting presentations	Not started
9	Percentage of fellows submitting posters	Not started
10	Percentage of fellows submitting talks	Not started
11	Percentage of fellows submitting manuscripts to journals	Not started
12	Percentage of fellows submitting manuscripts to preprint servers	Not started
13	Percentage of fellows submitting manuscripts to journals	Not started
14	Percentage of fellows submitting manuscripts to journals	Not started
15	Percentage of fellows submitting manuscripts to journals	Not started
16	Percentage of fellows submitting manuscripts to journals	Not started
17	Percentage of fellows submitting manuscripts to journals	Not started
18	Percentage of fellows submitting manuscripts to journals	Not started
19	Percentage of fellows submitting manuscripts to journals	Not started
20	Percentage of fellows submitting manuscripts to journals	Not started
21	Percentage of fellows submitting manuscripts to journals	Not started

The product



A future program tool

