



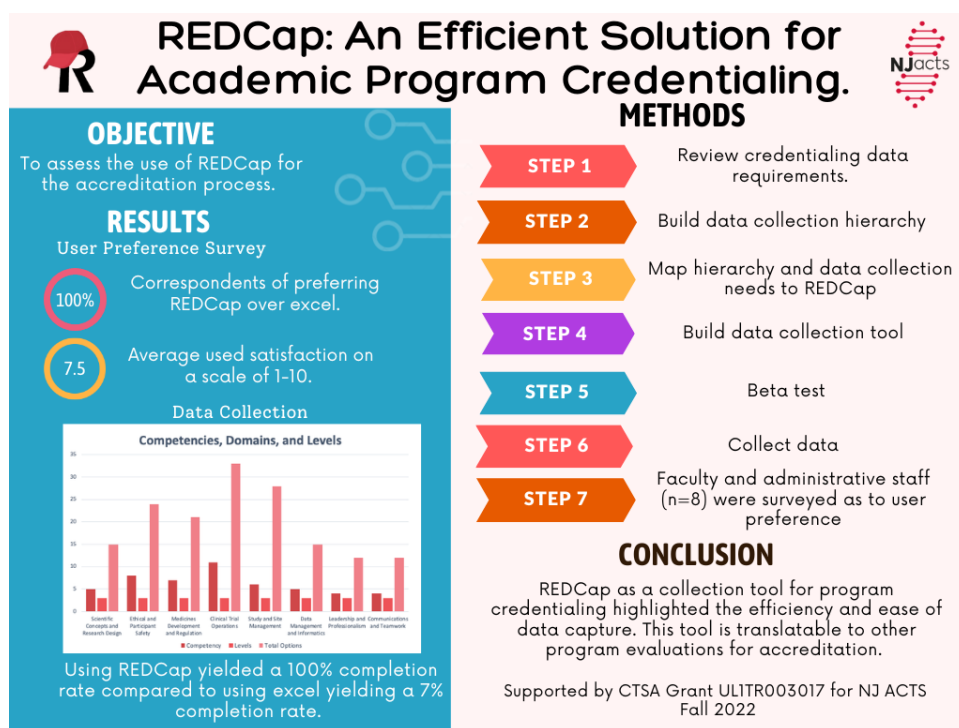
# REDCap: An Efficient Solution for Academic Program Credentialing

**Laasya Akurati; Barbara Tafuto MLS PhD and Doreen Waldron Lechner PhD**

**Introduction:** Clinical research degree program accreditation brings value to university programs situated in competitive environments. While the requirements of accreditation can be burdensome and tedious, it remains important to program growth. The objective of this project was to assess the use of REDCap for the accreditation process to reduce that burden.

**Methods:** A review of credentialing requirements was conducted to identify required data and its sources. Initial course data from a small sample of courses was collected in Excel to better assess the order of the data collection process. REDCap was then used to create a series of data collection instruments that effectively met the program evaluation data needs and customized reports for three years of course learning outcomes. The instruments were developed for its translation to other programs. Faculty, administrators, and interns participated in 2 different types of data collection activities (excel and REDCap) and evaluated the differences between the experiences. Data Collection included 85 courses, with a range of 3-22 objectives that classified aligned assignments among 8 Clinical Research Professional Domains, 50 competencies, and 3 learning levels. Student outcomes data was also calculated and recorded.

Data Collection included 85 courses, with a range of 3-22 objectives that classified aligned assignments among 8 Clinical Research Professional Domains, 50 competencies, and 3 learning levels. Student outcomes data was also calculated and recorded.



**Results:** The time to complete the data collection process using the REDCap tool versus the excel spreadsheet per course was notably more efficient. User satisfaction was 100% improved using the REDCap tool with an average score of 7.5 out of a 1-10 scale. User comments supporting the REDCap process focused on improved time to complete and ease of process. The incorporation of REDCap into data collection for program accreditation data requirements highlights the efficiency and ease of electronic data capture compared to manual entry in excel. The development of instruments makes it easy to translate to other program evaluation and accreditation needs.